

GT CONVERTERS

& Exhaust Warehouse



Technical Bulletin

NISSAN NORTH AMERICA, INC.
Copyright ©

SERVICE BULLETIN

Classification:	Reference:	Date:
EC10-008	NTB10-045	March 19, 2010

2005-2006 FRONTIER WITH QR25 ENGINE;

APPLIED VEHICLE: 2005-2006 Frontier (D40)

IF YOU CONFIRM:

DTC P0420 (TW CATALYST SYS-B1) is stored in the ECM,

ACTIONS:

Step A: Confirm this bulletin applies:

- Check the Current ECM Part Number (see page 3).
- Compare your Current ECM Part Number to Chart A on page 3.

If that part number does not match one in Chart A, this bulletin does not apply. Go back to ASIST for further diagnostic and repair information.

Step B: Replace the exhaust manifold catalyst (see page 4).

Step C: Reprogram the ECM (see page 4).

IMPORTANT: The purpose of "ACTIONS" (above) is to give you a quick idea of the work you will be performing. You **MUST** closely follow the entire Service Procedure (starting on page 3) as it contains information that is essential to successfully completing this repair.

GT CONVERTERS

& Exhaust Warehouse

PARTS INFORMATION

DESCRIPTION	PART #	QUANTITY
Manifold Assy-Exhaust	14002-EA00A	1
Gasket-exhaust	20691-30P00	1
Gasket-exhaust	14036-6N200	1

CLAIMS INFORMATION

Submit a Primary Part (PP) line claim using the following claims coding:

DESCRIPTION	PFP	OP CODE	SYM	DIA	FRT
RPL Exhaust Manifold w/Catalytic Converter	(1)	AR38AA	HD	32	(2)

1. Reference the Parts Information Table and use the applicable Manifold Assy-Exhaust P/N as the PFP.
2. Reference the current Nissan Warranty Flat Rate Manual and use the indicated FRT.

AND:

DESCRIPTION	PFP	OP CODE	SYM	DIA	FRT
Reprogram ECM per TSB		DE98AA (3)			0.5 hrs

3. FRT allows adequate time to access DTC codes. No diagnosis procedure subsequently required – do NOT claim any Diagnostic Op Codes with this claim.

SERVICE PROCEDURE

Step A: Confirm This Bulletin Applies

1. With CONSULT-II "ON", print the ECM Part Number as follows:

START(Nissan) >> **ENGINE** >> **ECM PART NUMBER** >> **COPY**

2. Attach this printout to the Repair Order.

- Figure 1 is an example of the ECM Part Number printout.
- You will use the ECM Part Number (P/N) to see if this bulletin applies.

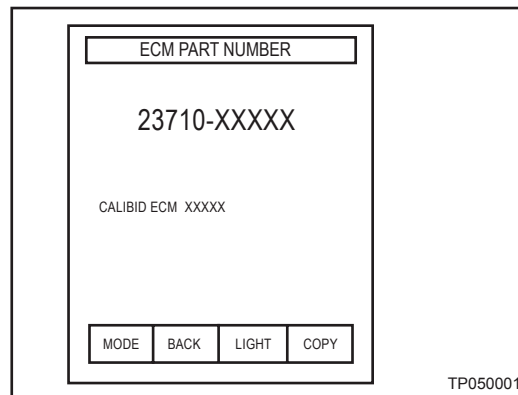


Figure 1

3. Check the ECM Part Number on the printout (see Figure 1);

- Compare your vehicle's ECM P/N to the one shown under **Current ECM P/N** in **Chart A**, below:
- If it's in that column, this bulletin applies.

Chart A

MODEL	YEAR	Vehicle Configuration	Current ECM P/Ns Before Reprogramming	New ECM P/N's
Frontier (D40) with 2.5L engine	2005	MT	23710-EA000, EA00A	23710-EA00B
		M/T with ASCD	23710-EA005, EA01A	23710-EA01B
		A/T	23710-EA010, EA02A	23710-EA02B
		A/T with ASCD	23710-EA015, EA03A	23710-EA03B
	2006	MT	23710-ZP02A, ZP02B	23710-ZP02C
		M/T with ASCD	23710-ZP03A, ZP03B	23710-ZP03C
		A/T	23710-ZP00A, ZP00B	23710-ZP00C
		A/T with ASCD	23710-ZP01A, ZP01B	23710-ZP01C

A. If your vehicle's ECM P/N matches the **Current ECM P/N** in the chart above:

- This bulletin applies. **Go to Step B, Replace the Exhaust Manifold Catalyst** (next page).

B. If your vehicle's ECM P/N does not match the **Current ECM P/N** in the chart above:

- **This bulletin does not apply.** Go back to ASIST for further diagnostic and repair information.

Step B: Replace the Exhaust Manifold Catalyst

1. Replace the Exhaust Manifold Catalyst with the one from the Parts Information section of this bulletin. Reference the **EXHAUST MANIFOLD AND THREE WAY CATALYST Removal and Installation** chapter in the **EM** section of the appropriate Electronic Service Manual if necessary.

NOTE: The manifold must be replaced before ECM reprogramming.

2. Go to **Step C: ECM REPROGRAMMING**

Step C: ECM REPROGRAMMING

Vehicle ECM Reprogramming Overview

- There are four basic steps (tasks) under Step C:
 1. Download reprogramming data (transfer it) from ASIST into CONSULT-II.
 2. "Preparation" steps before reprogramming.
 3. Reprogram the vehicle ECM.
 4. ECM Reprogramming "Wrap-up".

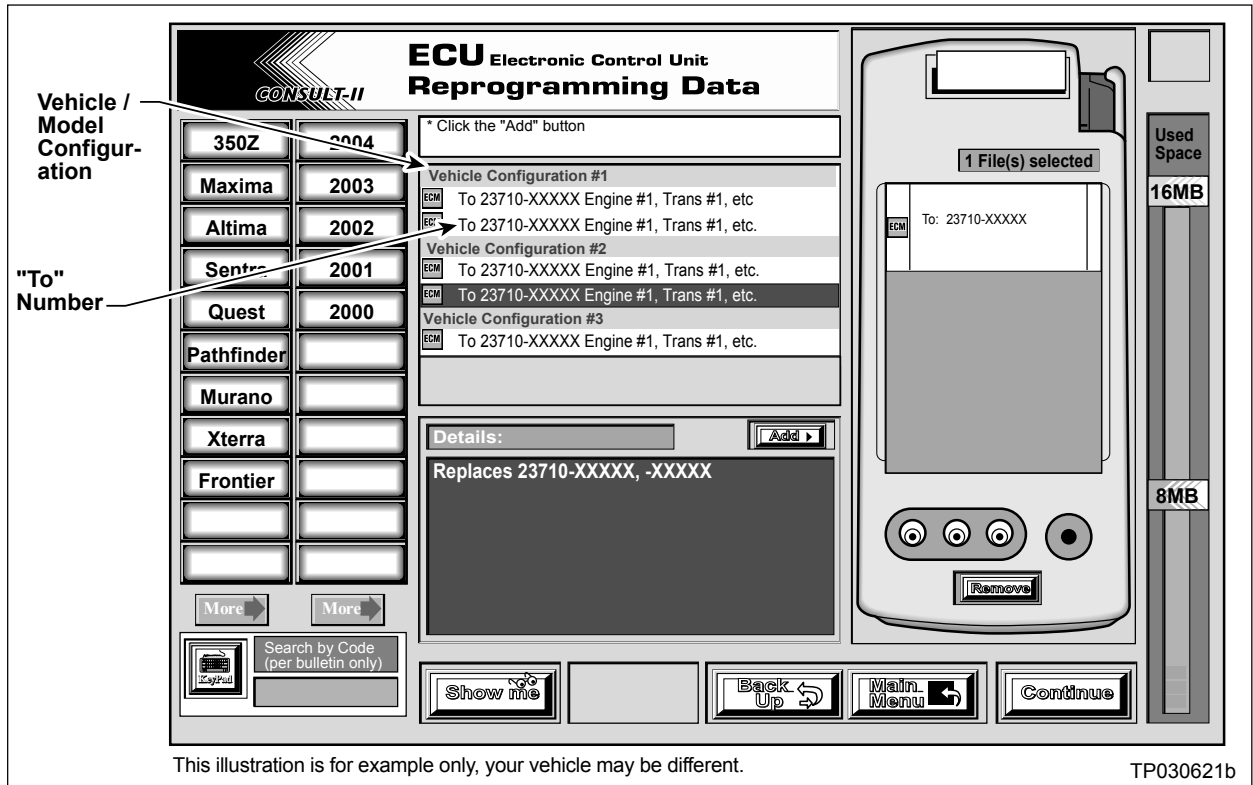
NOTE:

- If you're not familiar with the latest CONSULT-II ECM reprogramming procedures, click [here](#).

This will link you to the "ECM Reprogramming For Nissan Vehicles" general procedure

- For those familiar with ECM Reprogramming, please review the following steps (starting on the next page) and use them as a Quick Reference for ECM reprogramming.

Step One: Download (Transfer) Data From ASIST Into CONSULT-II



This illustration is for example only, your vehicle may be different.

TP030621b

Figure A

1. Select vehicle model and model year (Example: Frontier, 2005).
2. Select the correct reprogramming data:
 - a. Locate the specific "Model Configuration" (Example: 4WD).

NOTE: Model Configuration may include items such as engine type, transmission type, and vehicle options such as ASCD, TCS, ABS etc.
 - b. Select (click on) the "To" number.

NOTE: The "To" number will read: 23710-XXXXX.
3. Click on the "Add" button.
 - This will add the data you selected to the "File(s) Selected" list.
4. Write the "To" number on the Repair Order.
5. Click on "Continue" and follow directions to perform "data transfer" (download) from ASIST into CONSULT-II.

GT CONVERTERS

& Exhaust Warehouse

Step Two: Preparation for Reprogramming ECM

1. Connect a battery charger to the vehicle's battery.
 - Set the charger to a low charge rate (trickle charge).

CAUTION: For number 2 below and number 3 on the next page, **DO NOT** connect the CONSULT-II A/C Power Supply.

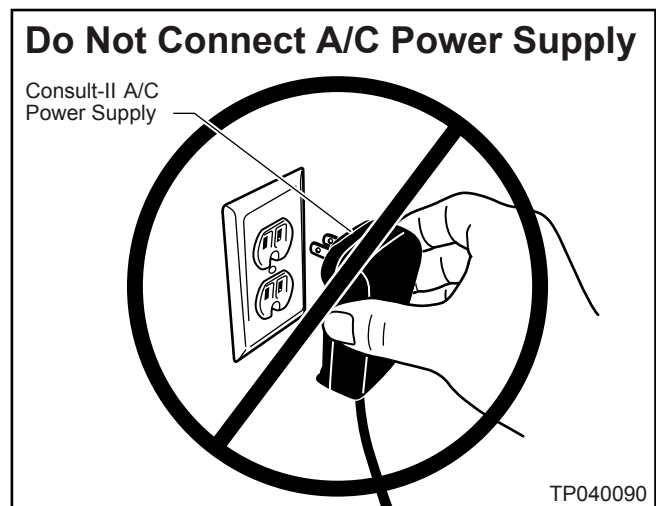


Figure B

2. Press **SUB MODE** (see Figure C) then:
 - a. From the listed items, find and select **BATTERY CHARGE**.

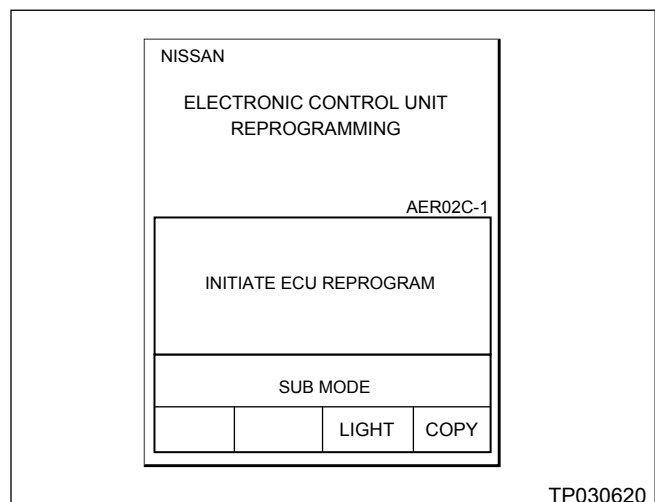


Figure C

GT CONVERTERS

& Exhaust Warehouse

3. Check the CONSULT-II's "Charger Input" reading (see Figure D).

NOTE:

- "Battery Voltage" is the voltage level of the CONSULT-II battery.
- "Charger Input" is the voltage level of the vehicle's battery. **It must be above 12 volts.**

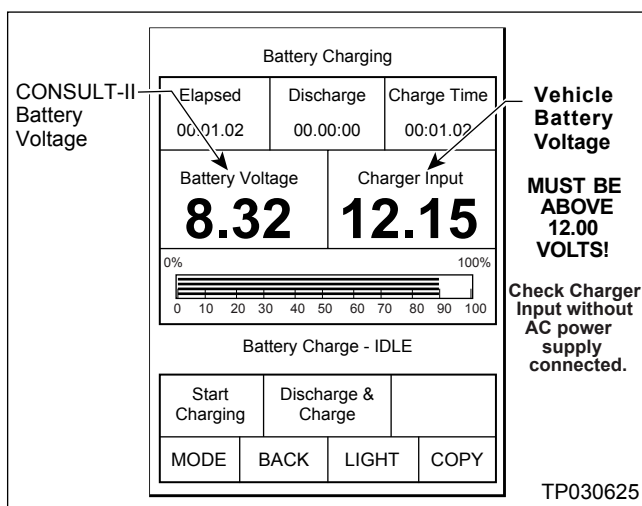


Figure D

CAUTION: If the "Charger Input" is below 12 volts:

- You'll find a list of items to check in the "ECM Reprogramming For Nissan Vehicles" general procedure. Click here to link to it.

Step Three: Reprogram the ECM

- If you are not familiar with **ECM** Reprogramming, click [here](#):
- This will link you back to a general procedure called "ECM Reprogramming For Nissan Vehicles."

GT CONVERTERS

& Exhaust Warehouse

Step Four: "Wrap-up" After Reprogramming is Finished

NOTE: Exhaust manifold catalyst **MUST** have been replaced before performing this step.

1. Turn the ignition switch "OFF" and CONSULT-II "OFF".
2. Wait more than 10 seconds, then;
 - a. Turn the ignition switch "ON" for 2 second, then
 - b. Turn the ignition switch "OFF" again for 10 seconds (see Figure E).
 - This will reset ECM "self learned" Data.

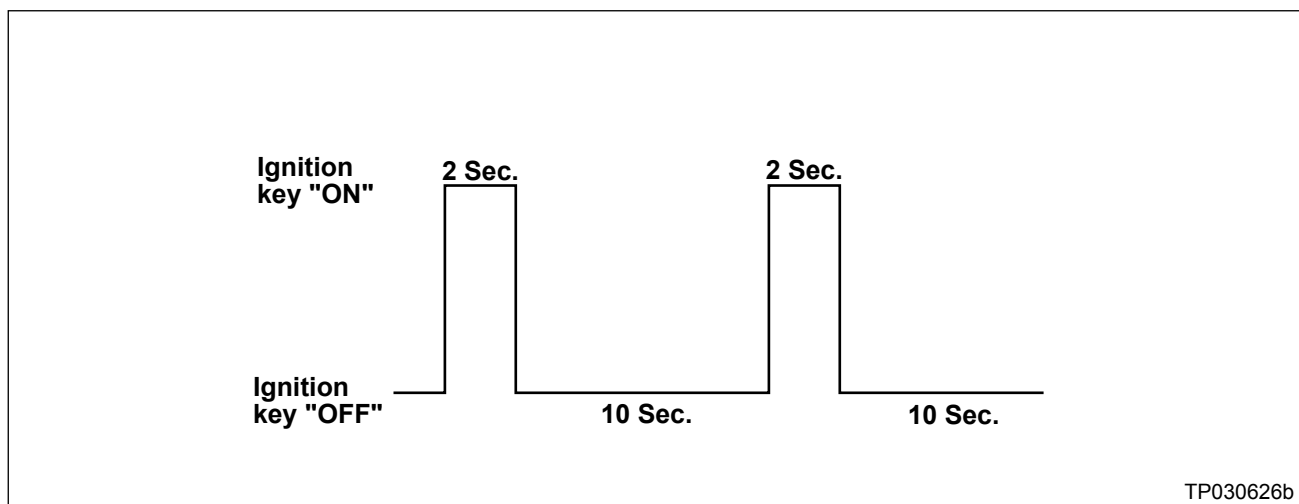


Figure E

3. Start the engine and check the idle speed.
 - If idle speed is too low, perform Idle Air Volume Learning (IAVL). See the appropriate Service Manual (ESM) for this procedure.

NOTE: If the engine will not idle, hold the engine RPM at about 2000, then slowly bring it down to an idle. IAVL can now be performed.
4. Confirm the engine is operating normally.
5. Make sure the MIL is OFF.
 - If the MIL comes ON, use CONSULT-II with the Diagnostic (red/white) Card to erase any DTCs that may have stored during the reprogramming procedure.